

Dear MIG MIS Users,


Internet Explorer (IE) desktop application will be soon be out of support. Microsoft has implemented the Internet Explorer mode in the Microsoft Edge (MS Edge) browser. This emulates Internet Explorer so that websites like the MIG-MIS and other tools should still work on MS Edge. MIG-MIS users are advised to switch to the MS Edge browser by following the steps below.

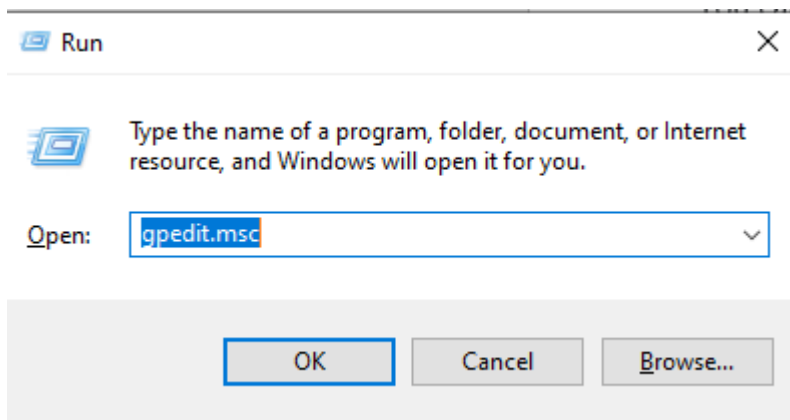
In this guide, we'll show you how to:

1. Setup Group Policy Editor
2. Enable Internet Explorer mode on MS Edge.

Step 1

You can use Group Policy to enforce compatibility view for a specific subdomain.

- Press Windows key  + R on the keyboard, to open the Run command
- Type **gpedit.msc** and press OK to launch Group Policy Editor.



Navigate to the following location: **Computer or User Configuration > Administrative Templates > Windows Components > Internet Explorer > Compatibility View**

And then double click on *User Policy List of Internet Explorer 7 sites* to edit the settings

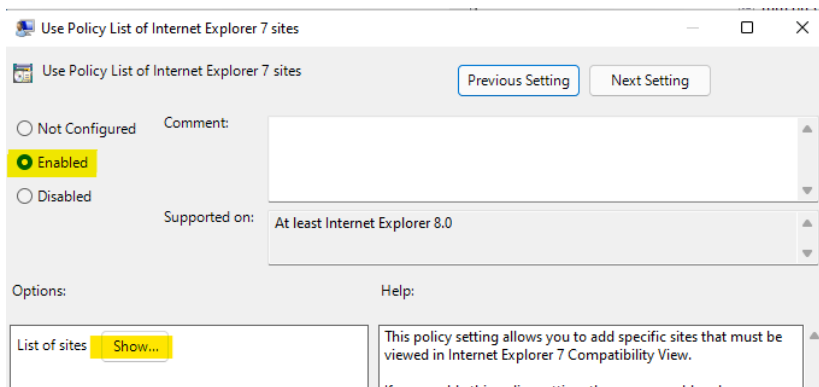
The screenshot shows the Local Computer Policy console. The left pane displays a tree view with the following structure:

- Local Computer Policy
 - Computer Configuration
 - Software Settings
 - Windows Settings
 - Administrative Templates
 - Control Panel
 - Network
 - Printers
 - Server
 - Start Menu and Taskbar
 - System
 - Windows Components
 - ActiveX Installer Service
 - Add features to Windows 10
 - App Package Deployment
 - App Privacy
 - App runtime
 - Application Compatibility
 - AutoPlay Policies
 - Biometrics
 - BitLocker Drive Encryption
 - Camera
 - Chat
 - Cloud Content
 - Connect
 - Credential User Interface
 - Data Collection and Preview Builds
 - Delivery Optimization
 - Desktop Gadgets
 - Desktop Window Manager
 - Device and Driver Compatibility
 - Device Registration
 - Digital Locker
 - Edge UI
 - Event Forwarding
 - Event Log Service
 - Event Logging
 - Event Viewer
 - File Explorer
 - File History
 - Find My Device
 - Handwriting
 - HomeGroup
 - Human Presence
 - Internet Explorer
 - Accelerators
 - Application Compatibility
 - Browser menus
 - Compatibility View

The right pane, titled 'Compatibility View', displays a table of settings:

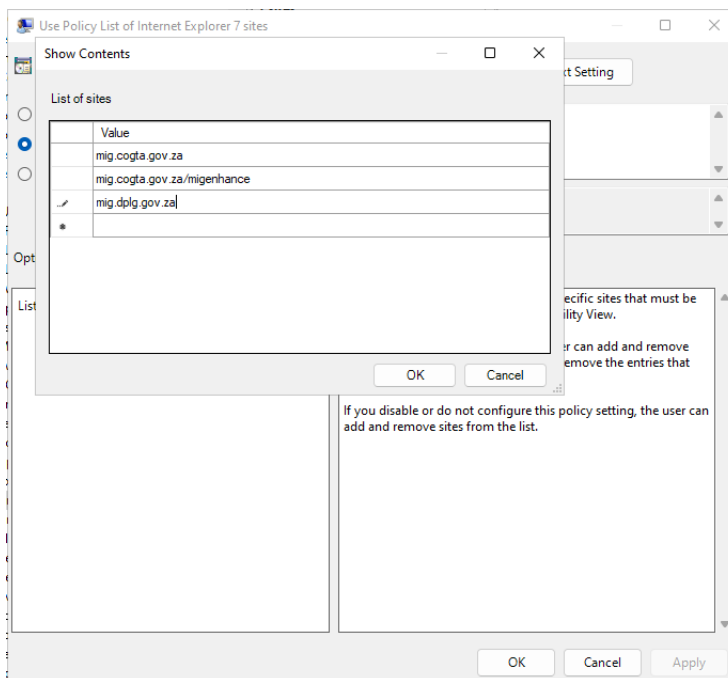
Setting	State	Comment
Turn on Internet Explorer 7 Standards Mode	Not configured	No
Turn off Compatibility View	Not configured	No
Turn on Internet Explorer Standards Mode for local intranet	Not configured	No
Turn off Compatibility View button	Not configured	No
Include updated website lists from Microsoft	Not configured	No
Use Policy List of Internet Explorer 7 sites	Enabled	No
Use Policy List of Quirks Mode sites	Not configured	No

- Click **Enabled**
- Click on **Show** to add the list of sites



- Add the following sites under **List of sites**

mig.cogta.gov.za
 mig.cogta.gov.za/migenhance
 mig.dplg.gov.za



- Click the **OK** button, **Apply** to save the changes
- Click **OK** to close the User Policy List of Internet Explorer 7 sites screen

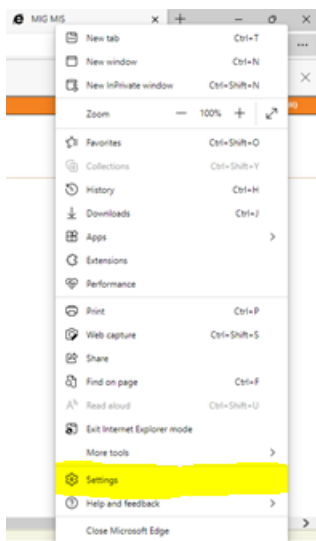
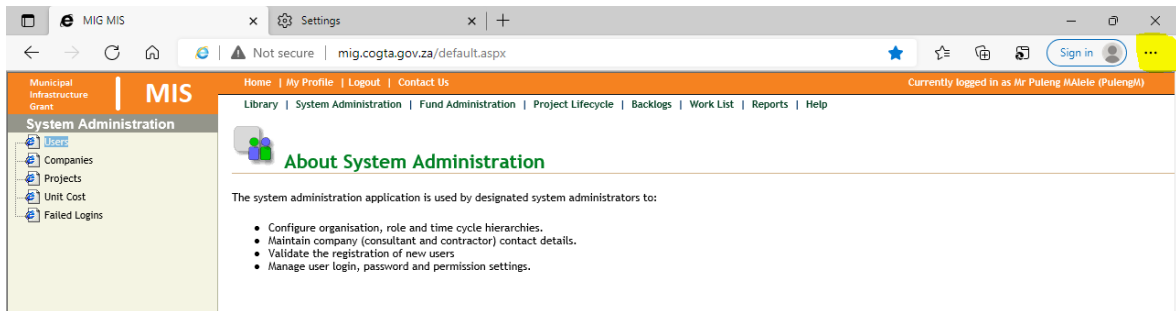
For computers that are part of a work domain

- Press Windows key + X or right-click on the start menu
- Select Windows PowerShell or Command Prompt
- Type **gpupdate /force** and press enter Wait for the Computer and User policy to update
- Reboot your computer A reboot is necessary to be sure that all settings are applied.

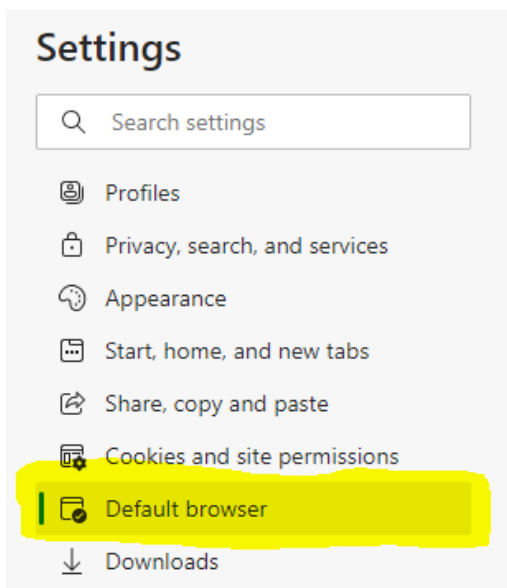
Step 2

Enable Internet Explorer mode on Microsoft Edge browser

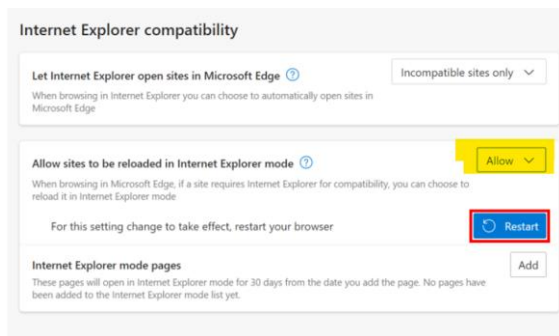
1. Open Microsoft Edge
2. Click the **Settings icon** in the top-right corner of the Edge browser and select **Settings** from the menu



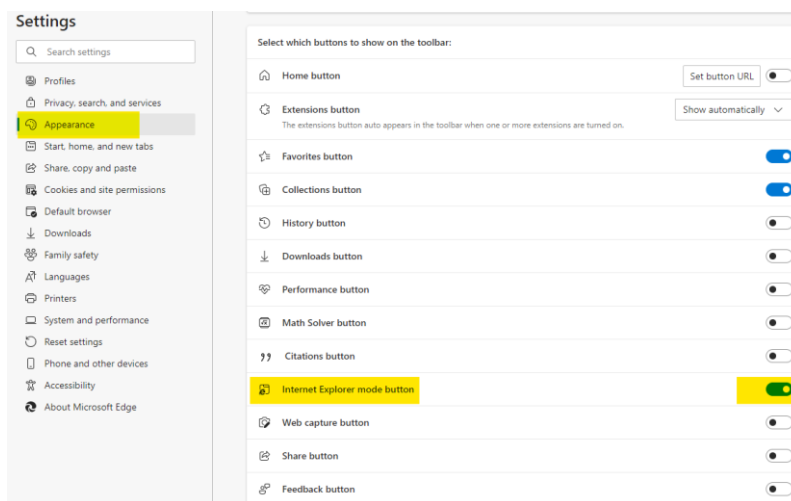
3. Click on **Default browser** on the left-hand side



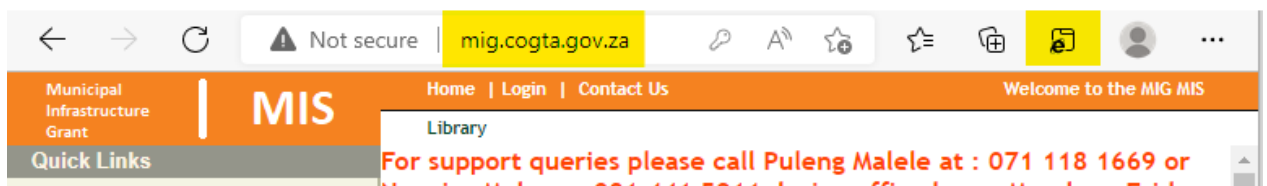
4. Select **“Allow”** under **Allow sites to be reloaded in Internet Explorer mode**. You may see a message explaining Internet Explorer mode. If so, click **Got It!** Return to the drop-down menu and select **Allow**.



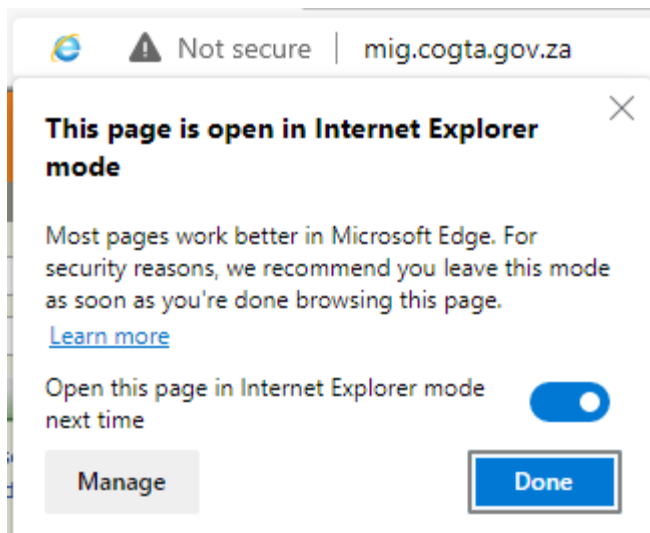
5. Click **Appearance** from the Settings menu on the left and then scroll down to **Internet Explorer mode button** . Click on the **Internet Explorer mode button** icon to activate it.



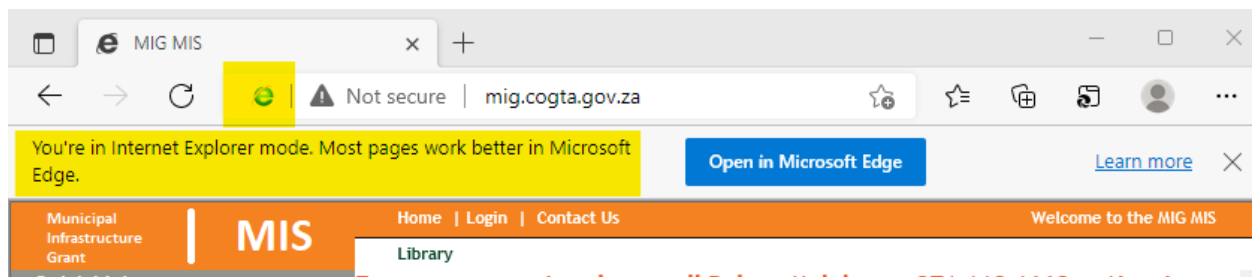
6. Restart MS Edge for the settings change to take effect.
7. Open MS Edge and enter the MIG-MIS website address <http://mig.cogta.gov.za>
8. Click the **Reload in Internet Explorer** icon



9. After clicking the **Reload in Internet Explorer** icon the browser will popup the screen below. Ensure that “**Open this page in Internet Explorer mode next time**” is activated.
10. Click the **Done** button



NB! The Internet Explorer icon and the message “**You’re in the Internet mode. Most pages work better in Microsoft Edge**” will be displayed when the MIG-MIS application is running in Internet Explorer mode.



This concludes the configuration of MS Edge browser to be compatible with the MIG-MIS application.

Optional: Additional Configuration for Ease of Access

In the settings menu, select “Start, Home and New Tabs”

Under “When Microsoft Edge Starts” select “Open these pages” and add the MIG MIS (mig.cogta.gov.za) page as below. You can also make the MIG MIS your Home Page. This additional configuration ensures that when opening Microsoft Edge, you will automatically be taken to the MIG MIS page and simply have to login and continue with your work

